



**CERTIFICATE OF MERIT NEWSLETTER**  
February 2010

CM Information Chair: Judi Sands-Pertel, [Jspmidi@aol.com](mailto:Jspmidi@aol.com)

April Newsletter deadline – March 31, 2010

---

2009-2010 CM CALENDAR

**CM Evaluation Dates**

**Feb. 20 –Apr. 3** Branch CM Evaluations North and South  
**Note:** Teachers check with your Branch Chair for your branch's evaluation dates

**Panel Regionals**

**Feb. 20** Strings Panel Regional South Violin/Viola

**Feb. 27 –28** Piano Panel Regional North – West Valley College in Saratoga

**Feb. 27 –28** Piano Panel Regional South – Whittier and Saddleback College

**Feb. 28** String Panel Regional South - Cello and Young Artist Guild

**March 6 –7** Piano Panel Regional North – West Valley College in Saratoga  
Piano Panel Regional South - Whittier College and Cal State Long Beach

**March 14** Panel applicants complete theory tests at their own branch

**Panel Finals**

**March 13** Deadline for Panel Final Application for North. No late applications accepted.

- March 15** Deadline for Panel Final Application for South. No late application accepted.
- March 20-21** Panel Finals North at West Valley College
- Mar. 26-28** Panel Finals South at Cal Poly Pomona  
 3/26-28: Piano  
 3/27 Winds (North and South) & Voice (North and South)  
 3/28 Strings (North and South)
- Convention and more.....**
- April 15** Deadline for Convention Applications. No late application. Deadline to apply for Make up Procedures High School Students only.
- April 15** Evaluator and Branch "Report Cards" due to Evaluator Chairs
- April 30–May 2** CM Council meeting
- May 15** Deadline for Completion of Make Up Procedure (MUP) Evaluations– High School Students only  
**Early Bird registration for Convention**
- June 1** **Deadline for all Evaluation Results to be entered into Database**
- June 1** Convention recitals schedules posted on the state website Go to **Convention 2010**, click on **Student Performance Information**
- Deadline to enter MUP results. Database closes after June 1
- July 2–July 6** Convention at Los Angeles Airport Marriott.  
**2010 Convention Theme:**  
**Our 100<sup>th</sup> Convention: A Century of Education and Service**
- Membership Information**
- July 31** Deadline for Membership dues for CM participation
-

TABLE OF CONTENTS

Note from CM Coordinator -----	pg. 3
Evaluator Chair Input-----	pg. 4
Voice News -----	pg. 4-5
Wind News-----	pg. 5
String News -----	pg. 5
Database Results -----	pg. 6-7
Q & A -----	pg. 7-8
~~~~~	

**NOTE FROM CM COORDINATOR**

**Dear Branch Chairs,**

It's just over a week before our first group of branches host their CM day(s). I know that this is the busiest time of the year for you, so my hope is that this newsletter contains the most pertinent information that you need for the next few weeks. Please read everything carefully.

Remember that the Evaluator Chairs / Branch Chair Liaisons (Peggy Taylor – South and Tina Carter – North) will be sending you your evaluator “Report Cards” in the next week. These are due back to them by April 15<sup>th</sup>.

Your feedback is appreciated and vital to continued improvement in our Evaluator Pool. If there is something wonderful that an evaluator has done, please mention it. We love to give our evaluators positive feedback when we receive it.

If there is a problem with an evaluator, it is best to contact your Liaison immediately via email or phone call. This will give us an opportunity to get in touch with that evaluator right away and hopefully put a stop to the problem before it goes any further. A more serious issue needs to be in writing.

Please do not let problems fade away. Help us to solve them by contacting your Evaluator Chair as needed, during the day, email follow up during the following week and then again in the report card.

Thanks so much for all you do! Let's continue working together make this program the best it can be.

Take care,  
Karen S. Becker  
CM Coordinator



### **Reminder about RAL's (from Keyboard Evaluator Chairs)**

MTAC Certificate of Merit (CM) Path A Keyboard Performance Evaluation  
Remain at Level (RAL)

RAL IS ONLY FOR STUDENTS CLEARLY NOT READY FOR EVALUATION

**Remember – A student receiving an RAL must repeat the level.**

**Automatic Remain at Level: One check in this section constitutes a Remain at Level**

- \_\_\_\_\_ 1. Sight Reading: Refuses to Attempt (legally blind students exempt)
- \_\_\_\_\_ 2. Technique: None prepared or cannot play without notation
- \_\_\_\_\_ 3. Advanced Level Required Etude Not Memorized; not from the Etude list (2007 Syllabus Pages 92-96)
- \_\_\_\_\_ 4. Required Number of Pieces Not Correct (2007 Syllabus Page 6)
- \_\_\_\_\_ 5. Memory Requirement Not Met (2007 Syllabus Page 6)
- \_\_\_\_\_ 6. Any student who brings a photocopy to evaluations or brings music reproduced from a CD or the Internet without a logo or the source (URL) to a CM evaluation will not be heard by an evaluator and will receive an automatic remain at level



### **VOICE NEWS!**

Special Reminder from our South/North Voice Chair Sarah Sandvig

**You still have time to order the CD's!** Branch Voice CM chairs or CM chairs: Please remember to order the voice ear training CD's from the State Office if you have any enrolled voice students. You will be receiving all three versions Set A, B and C. **This year use Set B, it is written on the bottom of the exam.**

From the CM Policy and Procedures:

**Procedures:**

III. BRANCH EVALUATIONS #3. Branches will purchase the ear-training materials for all disciplines and retain them at the branch. Ear Training CDs are not available to individual teachers.



**WIND NEWS!**

Special Reminder from Michelle Rumley, South Wind Chair

**You still have time to order the CD's.** Branch Wind CM chairs or CM chairs: Please remember to order the *New Wind Ear Training CD's* from the State Office if you have any enrolled wind students. **This year use Set B, it is written on the bottom of the exam.**

From the CM Policy and Procedures:

**Procedures:**

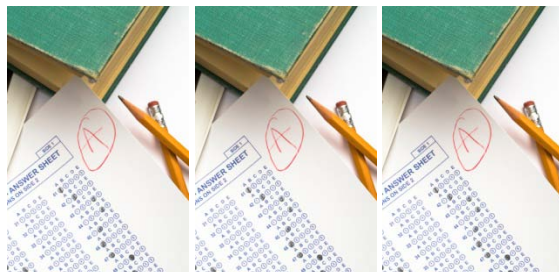
III. BRANCH EVALUATIONS #3. Branches will purchase the ear-training materials for all disciplines and retain them at the branch. Ear Training CDs are not available to individual teachers.



**STRING NEWS!**

Lori Jensen, String Chair North

Notice! Strings will be using Year 2 for ear training this year. The theory test covers say Set B.



## Evaluation Results Entry and Form Updates!

Lowell Webster, Database/BFS and Julie Johnson Ass't Coordinator

The **deadline** for  
online entry is June 1.

All evaluation results for all Path A students must be entered online. There are some reports to make this process easier. Chairs can ...

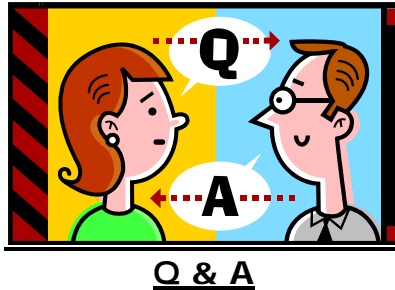
- use the Incomplete Results Entries available from the Reports link from the branch section of your branch home page. These reports identify the students and incomplete performance and/or theory data.
- remind teachers to look online for results using the evaluation results link from the teacher home page.

CM Chairs **must also send** or fax a paper copy of all Evaluator Schedules to Julie Johnson.

### Evaluation Results Form:

- The order of entry for online results matches the order of the paper form.
- The order of online results now more closely matches the order of the paper results form.

- Online results are in the following order (excepting some disciplines as appropriate) Sight reading, Technique, Repertoire, All memorized, Performance and Improvisation.
- There is now a No Show for theory.
- The No Show for performance is now in the Performance portion.



**Question:** What is the best way to search our website for past Q's and A's?

**Answer:** Utilize the Google Search found at the top of the State website. Example: type in Senior Medallion and you will see 10 responses in 3.6 seconds.

**Question:** What causes a student to receive "Ineligible for Certificate?"

**Answer:** Reasons for new "Ineligible for Certificate" Performance rating include, but are not limited to:

- Incorrect repertoire categories
- Advanced Level same composer for Etude and one other piece
- Played technique from incorrect syllabus

Lack of a copy of the musical score for the evaluator will not result in "Ineligible for Certificate," but the student will not qualify for Branch Honors or Convention Recitals.

**Question:** How are students chosen for the Convention Intermediate Master Class?

**Answer:** Students for the Intermediate Master Classes are chosen from a select pool of students in the intermediate levels 4-5-6. **This pool comes from those students who have entered CM and have applied for and been selected for "CM related Convention Recitals."** These students must have an excellent on Repertoire, Technique and Sight Reading, a 5+ rating on the convention piece and above 90% on their theory test. From this pool of students an equal mix of North/South students and a variety of

repertoire from different historical periods are considered. In addition, any special requests from the master teacher such as composer or level are taken into account. From this limited pool of students, calls are made to teachers beginning with the students with the highest theory score who are eligible in all other areas. Sometimes teachers feel their students are not ready to play in a master class. Theory test scores are used until the required number of students is found.

